

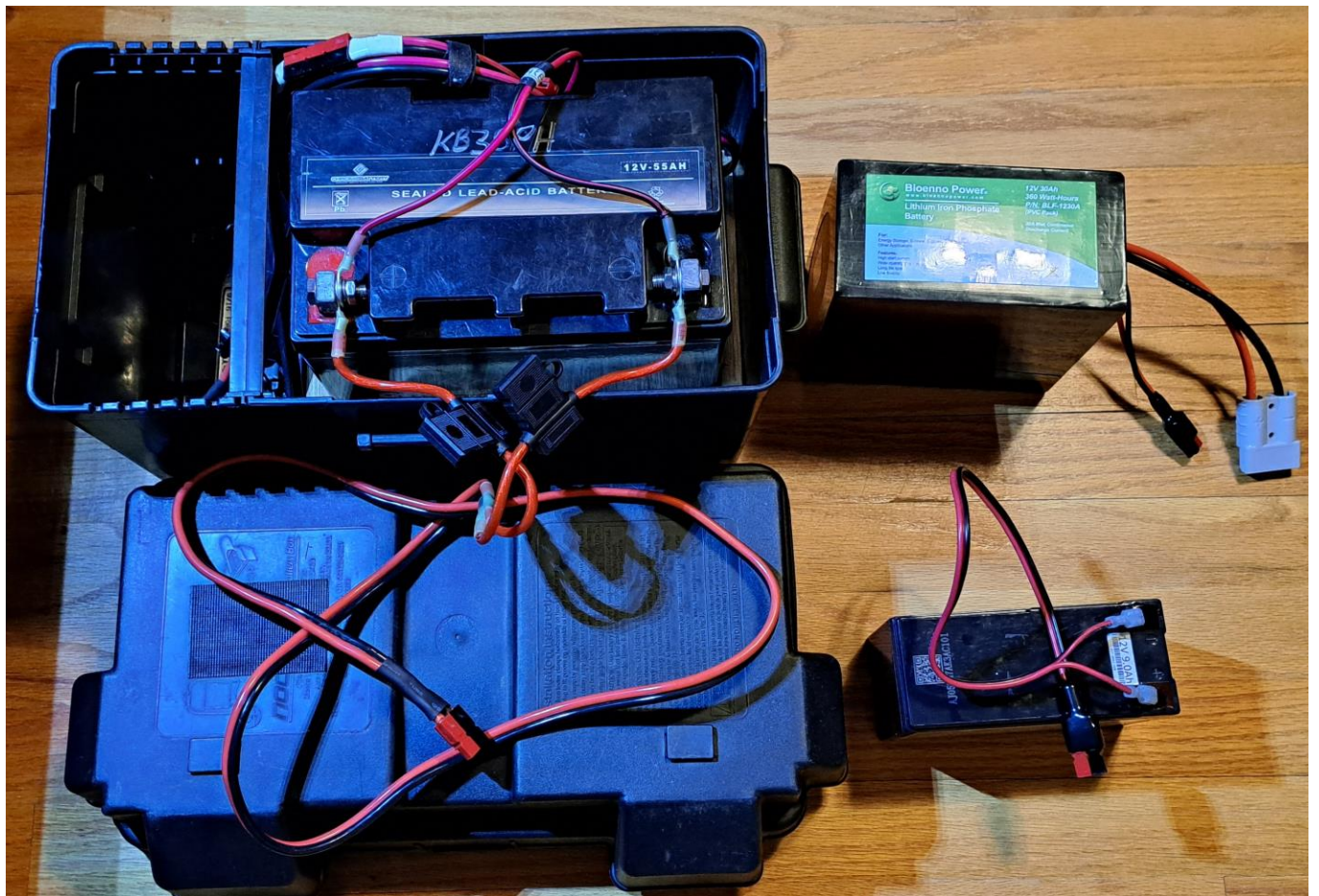
Note: Wiring Harness components will be available at the workshop for purchase except for 50A Powerpole connectors

Ref #s 14,18 - **#1 Wiring Harness** - Battery Pigtail (Note: A Bioenno Battery, might already have a pigtail with 45A PowerPoles and/or a 50A PowerPole connector)

\*Battery specific connectors (ring connectors? female spade? other?)

\*1' of 10-gauge red/black wire

\*Binding Post pigtail specific ends (45A PowerPoles?, 50A PowerPoles?, other?)



Three batteries with their #1 Wiring Harnesses

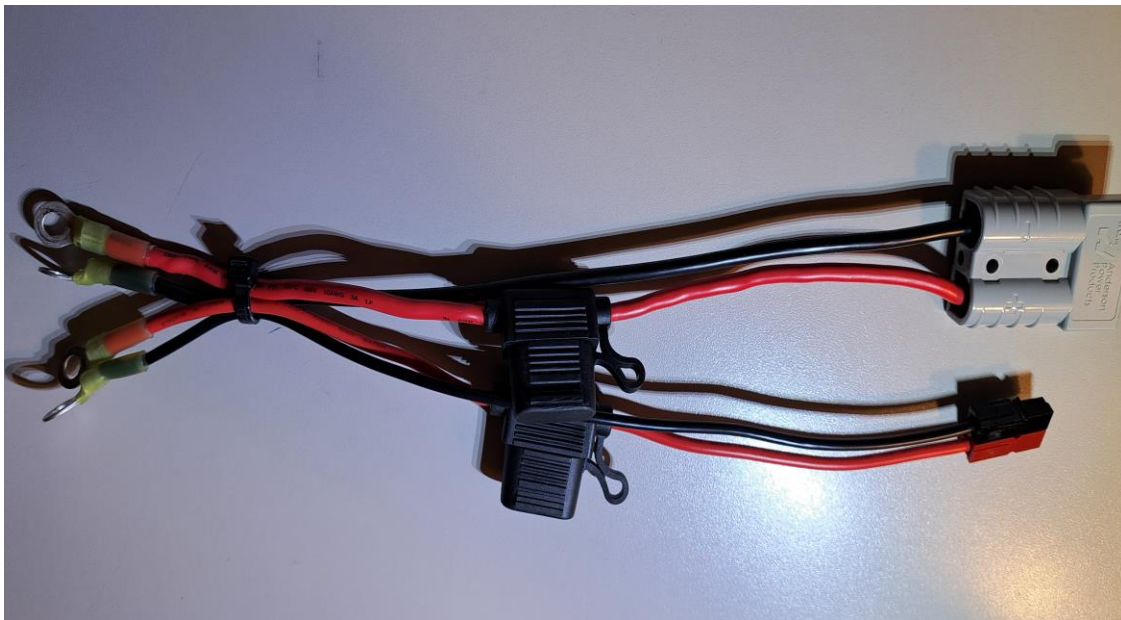
Ref #s 12,14,17,18 - **#2 Wiring Harness** - From Battery Pigtail to Binding Posts (allows battery to be completely disconnected)

\*Binding Post pigtail specific ends (45A PowerPoles?, 50A PowerPoles?, other?)

\*40A (10 gauge) fuse holder/red wire, 10-gauge butt connector, if required to extend red wire

\*1' of red/black 10-gauge wire

\*(2) 1/4" 10-gauge heat shrink ring terminals to connect to binding posts



#2 Wiring Harness examples: 10-gauge wire/fuse holder, 50A PowerPole on top

12-gauge wire/fuse holder, 30A PowerPoles on bottom.

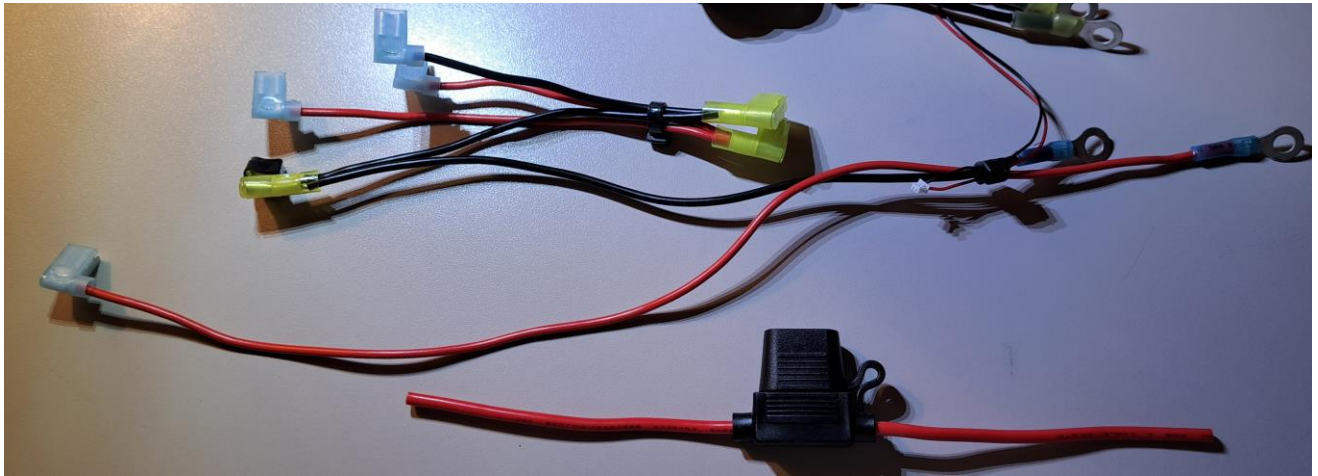
Ref #s 6,13,15,16, 20 - **#3 Wiring Harness** - Binding Posts to 15A circuit for USB/DC Outlet/etc.

\*(2) 1/4" 14-gauge heat shrink ring terminals to connect to binding posts

\*15-amp (14 gauge) fuse holder/red wire, 14-gauge butt connector, if required to extend red wire

\*10-12 gauge and 14-16 gauge flag terminals for DC outlet, USB module, Switch (if used), etc.

\*2' of 14-gauge red/black wire.



**#3 Wiring Harness example: 14 Gauge wire/flag terminals**

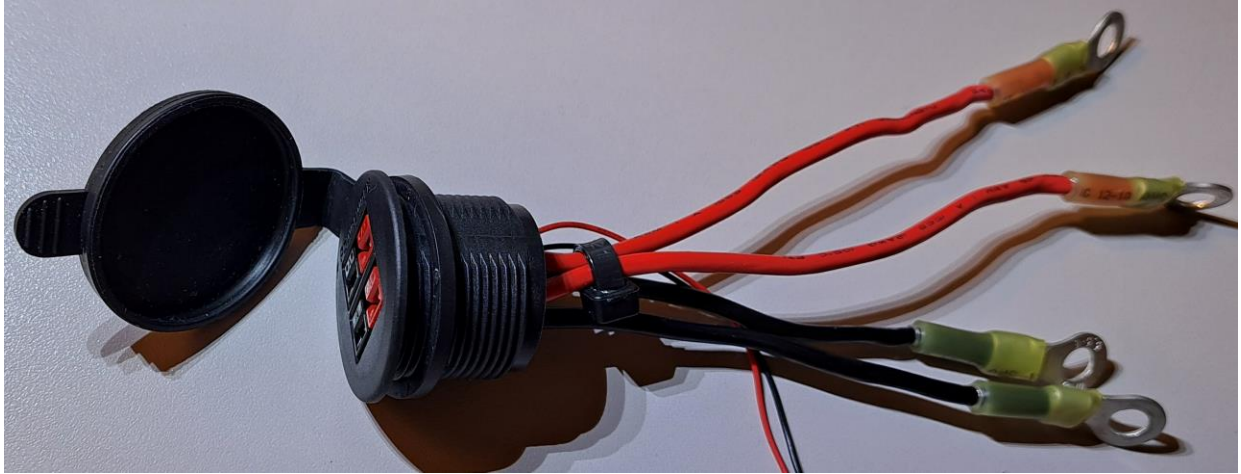
The long red wire second from bottom could include a 14-gauge fuse holder pictured at bottom



Ref #s: 17,19 - **#4 Wiring Harness** - Binding Posts to PowerPole outlet  
(PowerPole Outlet comes with (4) 30A contacts, can replace with 45A contacts, if desired)

\* (4) 1/4" 12-gauge heat shrink ring terminals to connect to binding posts

\* 1' red/black 12-gauge wire



#4 Wiring Harness example. The small gauge red and black wires in the photo are the leads from the battery meter (they are crimped in with a Powerpole contact)

Below: Wiring harnesses #2, #3, and #4 in place

